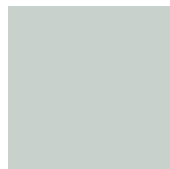


COLOUR CHART OF ALUMINUM SURFACES

RAL COLORS - STRUCTURAL



RAL 9016
Matt/ Feinstruktur



RAL 7035
Matt/ Feinstruktur



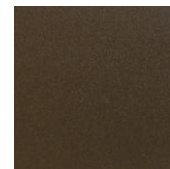
RAL 7004
Matt/ Feinstruktur



RAL 7016
Matt/ Feinstruktur



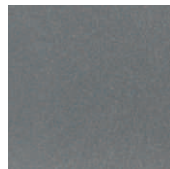
6768 BRAUN
Feinstruktur



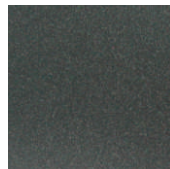
Rostiges eisen
Feinstruktur



RAL 9006
Metallic glatt



RAL 9007
Metallic glatt



DB 703
Metallic glatt



DB 703
Metallic Feinstruktur



RAL 8017
Matt/ Feinstruktur



RAL 5014
Matt/ Feinstruktur



RAL 5014
Matt/ Feinstruktur



RAL 5007
Matt/ Feinstruktur



RAL 6005
Matt/ Feinstruktur



RAL 8001
Matt/ Feinstruktur



RAL 8003
Matt/ Feinstruktur

SURFACE TREATMENT

- ☐ Aluminum housings are powder-coated, which is environmentally friendly and ensures excellent quality and durability of the coated surface.