



ALUMINIUM WINDOWS & ENTRANCE DOORS

SYSTEM ADS.SI

- ❑ Frame profile is made from 75 or 95 mm thick aluminium and has straight or curved lines
- ❑ Casement profile is made from 85mm or 75mm thick aluminium. ADS 75B.SI flush execution on both sides
- ❑ Frame and casement profiles include a core thermal insulation weatherstrip that improves their thermal performance
- ❑ Hard PUR foam core is clad in aluminium and features superior thermal insulation performance
- ❑ In variants where the casements are covered on both sides and have no glazing, the thermal transmittance of the doors is $U_d = 0.81 \text{ W/m}^2\text{K}$, while in aluminium entrance doors with cladding on one side the U_d value is $1.2 \text{ W/m}^2\text{K}$.

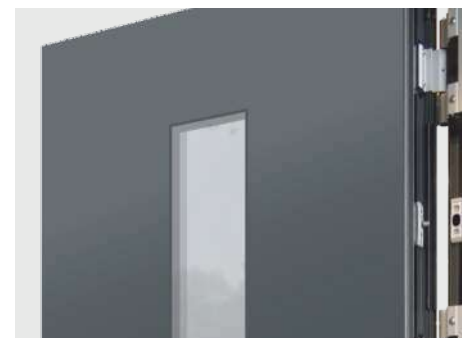


HARDWARE

- ❑ Quality three-dimensional adjustable hinges.
- ❑ 3 or 5-point locking of the leaf.
- ❑ Various options for opening: outside opening, a fingerprint system, electrical opening etc.

GLAZING

- ❑ You can choose from a variety of thermal and acoustic insulation and safety glass.
- ❑ A wide selection of ornaments and vitrages according to your wishes.
- ❑ Finishing the glass with various foils, glass accessories, sandblasting etc.



SURFACE TREATMENT

- ❑ Quality and environmentally friendly powder coating surfaces.
- ❑ You can choose from a wide range of standard colours, metallic colours,
- ❑ imitation wood dekors and colours from RAL colour chart.



VIEW FROM OUTSIDE



VIEW FROM THE INSIDE



Opening the door
with dLine Fingerprint



Opening the door
with a keypad

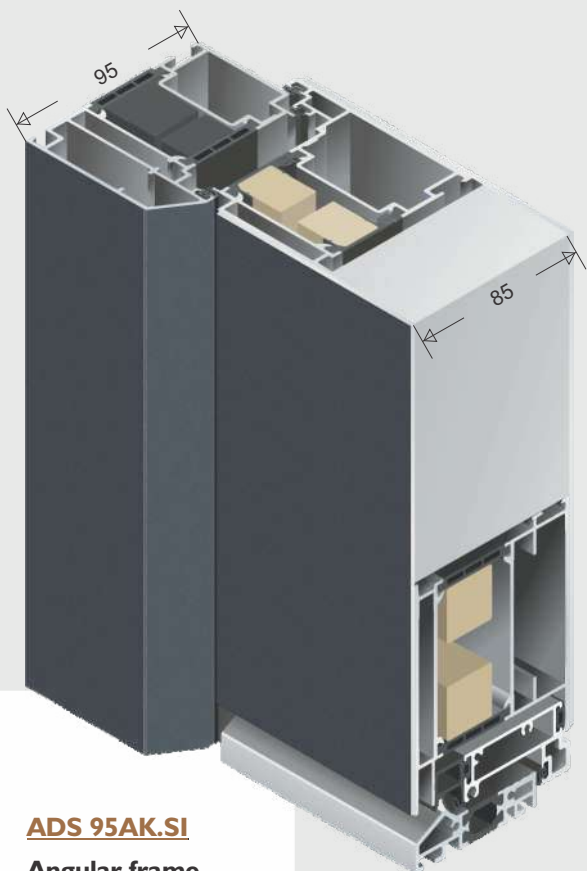


Handle with an integrated
LED light



LED light

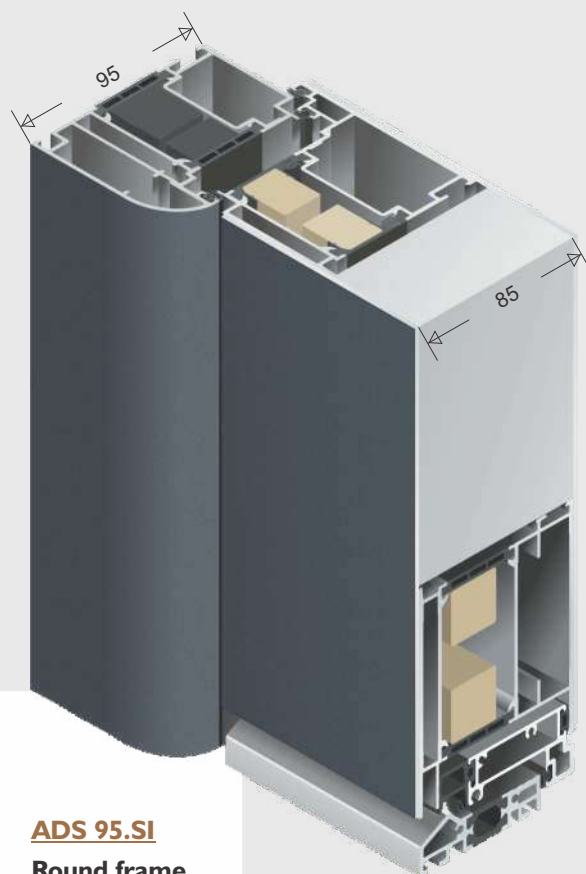
ALUMINIUM DOORS COLLECTION **INO-AH**



ADS 95AK.SI
Angular frame

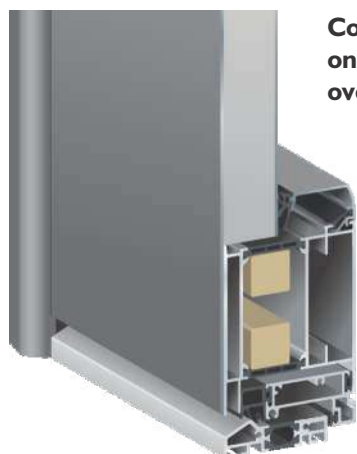
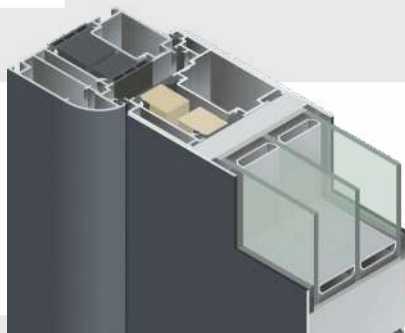
Coating of aluminum on both sides
overlap the door frame

$U_d = 0,81 \text{ W/m}^2\text{K}$
(full filling)



ADS 95.SI
Round frame

Triple glazing



Coating of aluminum
on outer side
overlap the door frame

$U_d = 1,2 \text{ W/m}^2\text{K}$
(full filling)



Version with visible wing

In these models the wings are visible both inside and outside.

They are available in all types of doors except for the Deluxe series.



ADS 75B.SI

Inside and outside
flush

Coating of aluminum on both sides
overlap the door frame

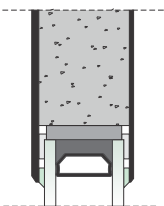
Ud = 0,81 W/m²K
(full filling)



ADS 75.SI
flush on the outside

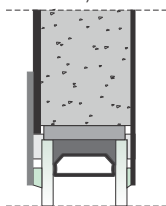
GLAZING SYSTEMS

OVR



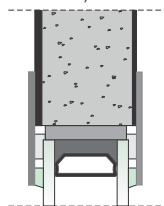
Series TREND

EVR by one side



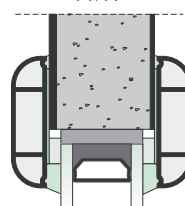
Series DELUXE
(Standardausführung)

EVR by two sides



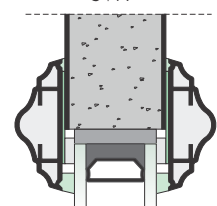
Series DELUXE

AVR



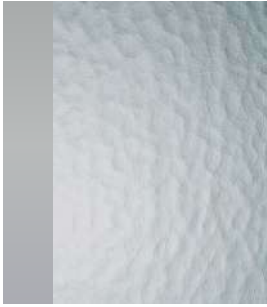
Series MODERN, CLASSIC

SVR



GLAZING

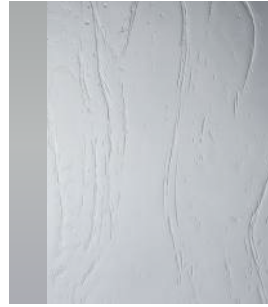
Ornamental glass



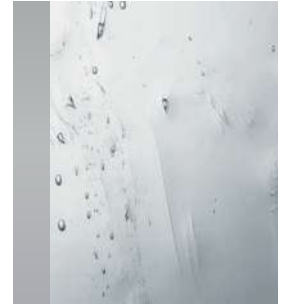
Kathedral K. white



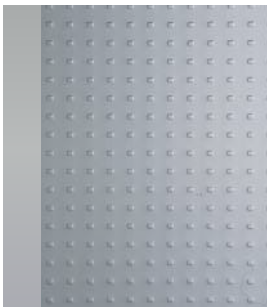
Chinchilla white



Gothic white



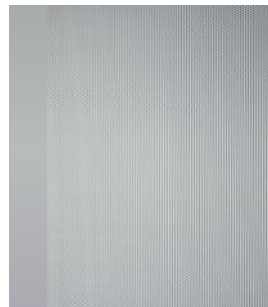
Altdeutsch K white



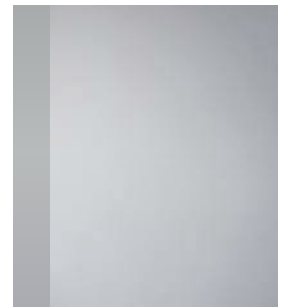
Mastercarre white



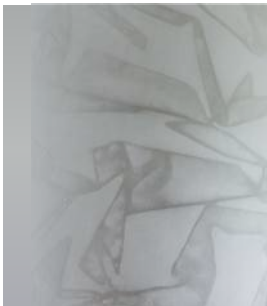
Masterligne white



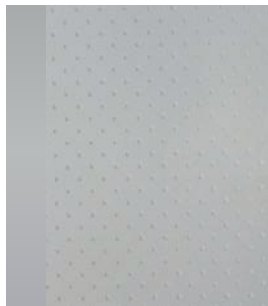
Masterpoint white



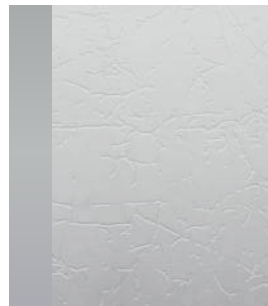
Satinato white



Silk white



Pave white

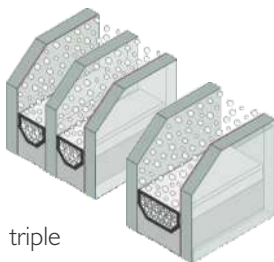


Uadi white



Nebulosa white

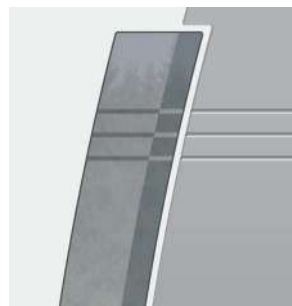
THERMAL INSULATING GLASS



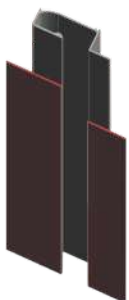
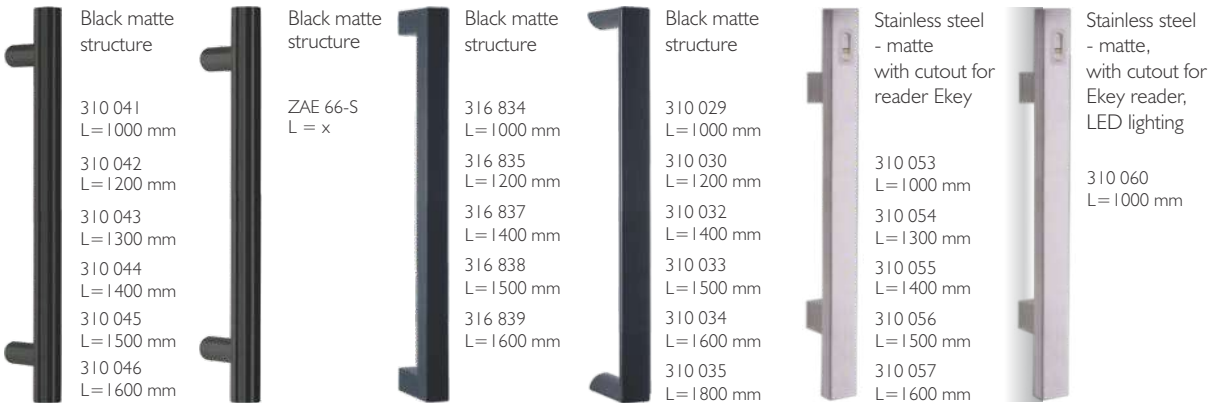
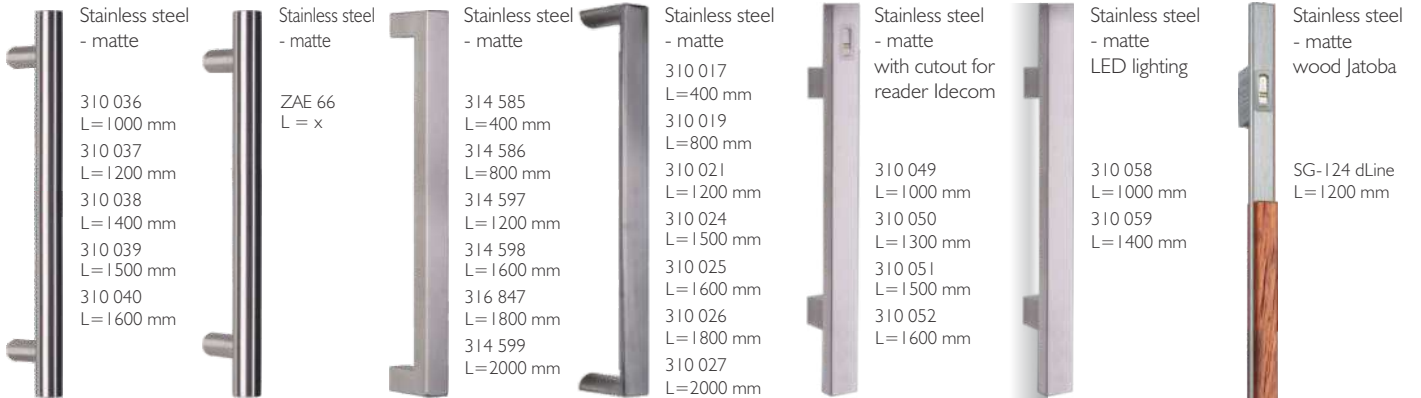
triple

twice

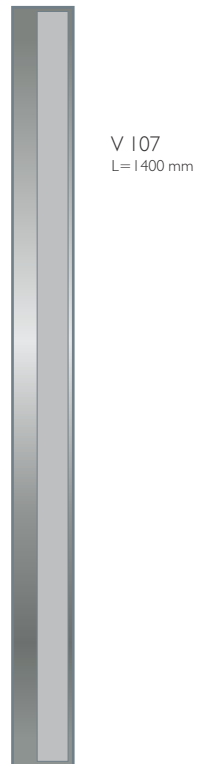
SANDBLASTED GLASS



HANDLES



J 137 flush-mounted
Integrated handle strip -
RAL color; Visible gap = 45mm
Length in mm according to request





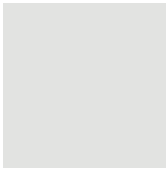





COLOUR CHART OF ALUMINIUM SURFACES

Colours of aluminium for wood and wood/aluminium windows and doors

MASTER COLLECTION (feinstruktur, metallic)



			
Night Grey Feinstruktur Metallic	Cast Iron Feinstruktur Metallic	Russet Copper Feinstruktur Metallic	Brown Feinstruktur Metallic
			
Artic Ice Feinstruktur Metallic	Granit Nature Feinstruktur Metallic	Volcanic Ash Feinstruktur Metallic	Precious Sand Feinstruktur Metallic

ANODIZING COLLECTION (matt, metallic)



			
CARBON NIGHT Matt Metallic	DARK COPPER Matt Metallic	SIMPLY COPPER Matt Metallic	ORIGINAL PLATINIUM Matt Metallic
			
GSPED 0 Matt	GSPED 1 Matt	GSPED 4 Matt	NOBLE BRONZE Matt Metallic

RAL FARBEN (matt, feinstruktur, metallic, glatt)



			
RAL 9016 Matt/ Feinstruktur	RAL 7035 Matt/ Feinstruktur	RAL 7004 Matt/ Feinstruktur	RAL 7016 Matt/ Feinstruktur
			
RAL 9006 Metallic glatt	RAL 9007 Metallic glatt	DB 703 Metallic glatt	DB 703 Metallic Feinstruktur

Imitation in stone



Dekor Zement hell



Dekor Beton dunkel

Imitation in wood

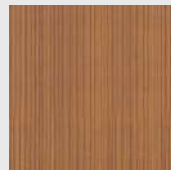


Dekor Altholz
(Stadelholz-1N)

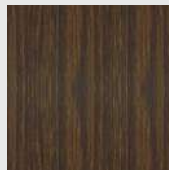


Dekor Stadelholz grau

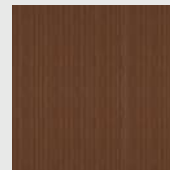
IMITATION
IN WOOD



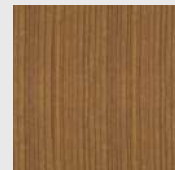
Douglas 7



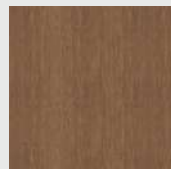
Eiche dunkel



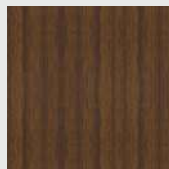
Kirsch 2



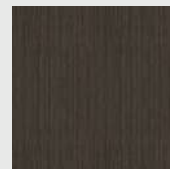
Kirsch 3



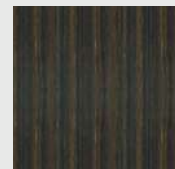
Golden Oak



Nuss 1



Wenge



Walnuss dunkel

Inles d.d.

SI - 1310 Ribnica, Kolodvorska 22
tel.: 01 8377 100, fax: 01 8377 333

e-mail: info@inles.si



www.inles.si